

## Double tube linear actuators

with right or left hand thread, double slider

### SPECIFICATION

#### Types

- Type **R1**: Right hand thread, single shaft end
- Type **R2\***: Right hand thread, two shaft ends
- Type **L1\***: Left hand thread, single shaft end
- Type **L2\***: Left hand thread, two shaft ends

\* normally not available from stock

Guide tube DIN 2391

Steel chrome-plated **SCR**

End pieces / Slider / Adapter plated Aluminium

plastic coated

black, RAL 9005, textured finish

Fixing surface / mounting surface machined, blank

Spindle with trapezoidal thread

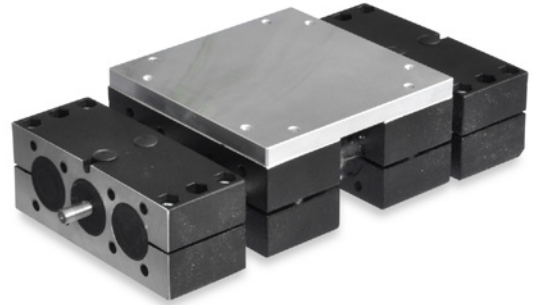
- Steel, blank
- with ball-bearing
- Positioning accuracy  $\pm 0.2$  mm/300 mm travel

Follower nut, gun metal

Cylinder head screws DIN 912 /

Hexagon nuts DIN 985

Steel, zinc plated



### INFORMATION

In addition to the standard travel lengths specified in the above table for the double tube linear actuator GN 492 any length inside the maximum length is available.

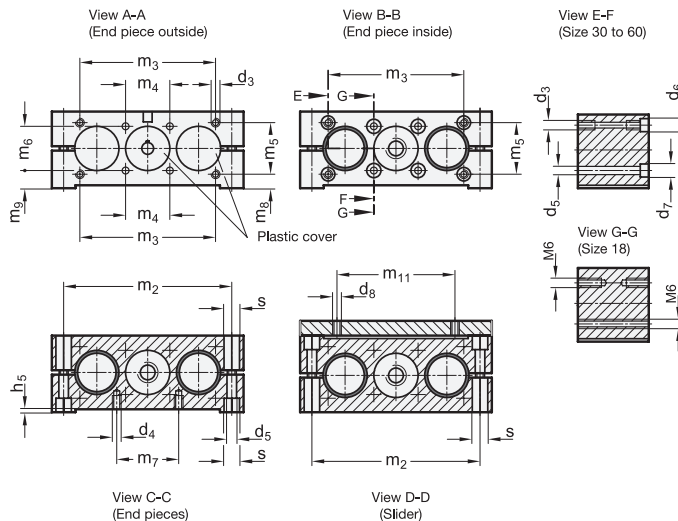
In order to measure the movement and positioning of the sliders, digital position indicators can be added.

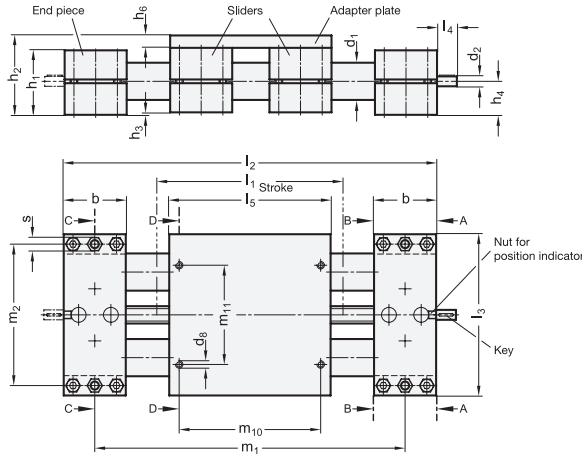
### ACCESSORY

- Installation kits GN 491.1 (see page 1955) for position indicators

### TECHNICAL INFORMATION

- Mounting facilities of end pieces (see page 1950)
- Technical information / Load data of Double tube linear actuators (see page 1946)





GN 492

Description	d1	l1	Max. travel	Shaft thread	b	d2	d3	d4	d5	d6	For screw DIN 912 d7	For screw DIN 912 d8	h1	h2	h3	h4	h5	h6		
GN 492-18-100-R1-SCR	18	100	400	TR10x3	28	6	-	M 5***	5.3	-	-	-	M 5	28	37	1	14.5	0.75	8	
GN 492-18-150-R1-SCR	18	150	400	TR10x3	28	6	-	M 5***	5.3	-	-	-	M 5	28	37	1	14.5	0.75	8	
GN 492-18-200-R1-SCR	18	200	400	TR10x3	28	6	-	M 5***	5.3	-	-	-	M 5	28	37	1	14.5	0.75	8	
GN 492-18-300-R1-SCR	18	300	400	TR10x3	28	6	-	M 5***	5.3	-	-	-	M 5	28	37	1	14.5	0.75	8	
GN 492-30-100-R1-SCR	30	100	1500	TR14x4	50	8	M 6**	M 6***	6.5	10	M 5	11	M 6	M 6	52	64	2	27	0.85	10
GN 492-30-150-R1-SCR	30	150	1500	TR14x4	50	8	M 6**	M 6***	6.5	10	M 5	11	M 6	M 6	52	64	2	27	0.85	10
GN 492-30-200-R1-SCR	30	200	1500	TR14x4	50	8	M 6**	M 6***	6.5	10	M 5	11	M 6	M 6	52	64	2	27	0.85	10
GN 492-30-300-R1-SCR	30	300	1500	TR14x4	50	8	M 6**	M 6***	6.5	10	M 5	11	M 6	M 6	52	64	2	27	0.85	10
GN 492-40-100-R1-SCR	40	100	2500	TR20x4	60	12	M 8**	M 8***	8.5	13.5	M 6	13.5	M 8	M 8	60	76	3	31.5	1.05	13
GN 492-40-150-R1-SCR	40	150	2500	TR20x4	60	12	M 8**	M 8***	8.5	13.5	M 6	13.5	M 8	M 8	60	76	3	31.5	1.05	13
GN 492-40-200-R1-SCR	40	200	2500	TR20x4	60	12	M 8**	M 8***	8.5	13.5	M 6	13.5	M 8	M 8	60	76	3	31.5	1.05	13
GN 492-40-300-R1-SCR	40	300	2500	TR20x4	60	12	M 8**	M 8***	8.5	13.5	M 6	13.5	M 8	M 8	60	76	3	31.5	1.05	13
GN 492-50-100-R1-SCR	50	100	2630	TR20x4	72	12	M 10**	M 8***	8.5	15	M 8	15	M 8	M 8	72	92	4	38	1.2	16
GN 492-50-150-R1-SCR	50	150	2630	TR20x4	72	12	M 10**	M 8***	8.5	15	M 8	15	M 8	M 8	72	92	4	38	1.2	16
GN 492-50-200-R1-SCR	50	200	2630	TR20x4	72	12	M 10**	M 8***	8.5	15	M 8	15	M 8	M 8	72	92	4	38	1.2	16
GN 492-50-300-R1-SCR	50	300	2630	TR20x4	72	12	M 10**	M 8***	8.5	15	M 8	15	M 8	M 8	72	92	4	38	1.2	16
GN 492-60-400-R1-SCR	60	400	2580	TR25x5	80	14	M 10**	M 10***	10.5	13.5	M 8	16.5	M 10	M 10	86	106	4	45	1.35	16
GN 492-60-500-R1-SCR	60	500	2580	TR25x5	80	14	M 10**	M 10***	10.5	13.5	M 8	16.5	M 10	M 10	86	106	4	45	1.35	16
GN 492-60-600-R1-SCR	60	600	2580	TR25x5	80	14	M 10**	M 10***	10.5	13.5	M 8	16.5	M 10	M 10	86	106	4	45	1.35	16

GN 492

Description	l2	l3	l4	l5	m1	m2	m3	m4	m5	m6	m7	m8	m9	m10	m11	s	Shaft key spring DIN 6885	Position indicator	Handwheel	⚖
GN 492-18-100-R1-SCR	2xb+15+1	81	16	80	b+15+1	68	-	20	-	20	18	-	4.5	68	52	8	A2x2x12	DD50	GN 923.18	1020
GN 492-18-150-R1-SCR	2xb+15+1	81	16	80	b+15+1	68	-	20	-	20	18	-	4.5	68	52	8	A2x2x12	DD50	GN 923.18	1120
GN 492-18-200-R1-SCR	2xb+15+1	81	16	80	b+15+1	68	-	20	-	20	18	-	4.5	68	52	8	A2x2x12	DD50	GN 923.18	1200
GN 492-18-300-R1-SCR	2xb+15+1	81	16	80	b+15+1	68	-	20	-	20	18	-	4.5	68	52	8	A2x2x12	DD50	GN 923.18	1360
GN 492-30-100-R1-SCR	2xb+15+1	130	16	130	b+15+1	114	92	30	35	30	42	9.5	12	114	80	10	A2x2x12	DD51 DD51-E	GN 923.30	4000
GN 492-30-150-R1-SCR	2xb+15+1	130	16	130	b+15+1	114	92	30	35	30	42	9.5	12	114	80	10	A2x2x12	DD51 DD51-E	GN 923.30	4340
GN 492-30-200-R1-SCR	2xb+15+1	130	16	130	b+15+1	114	92	30	35	30	42	9.5	12	114	80	10	A2x2x12	DD51 DD51-E	GN 923.30	4500
GN 492-30-300-R1-SCR	2xb+15+1	130	16	130	b+15+1	114	92	30	35	30	42	9.5	12	114	80	10	A2x2x12	DD51 DD51-E	GN 923.30	4900
GN 492-40-100-R1-SCR	2xb+15+1	180	17	180	b+15+1	160	132	39	38	39	62	12.5	12	160	120	13	A4x4x12	DD52R DD52R-E	GN 924.40	8650
GN 492-40-150-R1-SCR	2xb+15+1	180	17	180	b+15+1	160	132	39	38	39	62	12.5	12	160	120	13	A4x4x12	DD52R DD52R-E	GN 924.40	9000
GN 492-40-200-R1-SCR	2xb+15+1	180	17	180	b+15+1	160	132	39	38	39	62	12.5	12	160	120	13	A4x4x12	DD52R DD52R-E	GN 924.40	9665
GN 492-40-300-R1-SCR	2xb+15+1	180	17	180	b+15+1	160	132	39	38	39	62	12.5	12	160	120	13	A4x4x12	DD52R DD52R-E	GN 924.40	10150
GN 492-50-100-R1-SCR	2xb+15+1	206	18	206	b+15+1	184	150	46	50	46	62	13	15	184	134	13	A4x4x12	DD52R DD52R-E	GN 924.50	14000
GN 492-50-150-R1-SCR	2xb+15+1	206	18	206	b+15+1	184	150	46	50	46	62	13	15	184	134	13	A4x4x12	DD52R DD52R-E	GN 924.50	14440
GN 492-50-200-R1-SCR	2xb+15+1	206	18	206	b+15+1	184	150	46	50	46	62	13	15	184	134	13	A4x4x12	DD52R DD52R-E	GN 924.50	14860
GN 492-50-300-R1-SCR	2xb+15+1	206	18	206	b+15+1	184	150	46	50	46	62	13	15	184	134	13	A4x4x12	DD52R DD52R-E	GN 924.50	16020
GN 492-60-400-R1-SCR	2xb+15+1	240	19	240	b+15+1	216	185	55	60	55	74	14	16.5	216	160	17	A5x5x16	DD52R DD52R-E	GN 924.60	26900
GN 492-60-500-R1-SCR	2xb+15+1	240	19	240	b+15+1	216	185	55	60	55	74	14	16.5	216	160	17	A5x5x16	DD52R DD52R-E	GN 924.60	28550
GN 492-60-600-R1-SCR	2xb+15+1	240	19	240	b+15+1	216	185	55	60	55	74	14	16.5	216	160	17	A5x5x16	DD52R DD52R-E	GN 924.60	30200

\*\* useable depth of thread from both sides min. 2 x d3 | \*\*\* useable depth of thread min. 1.5 x d4

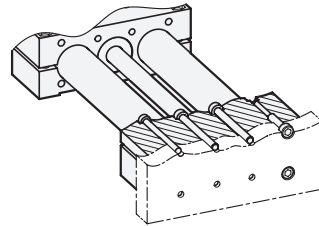
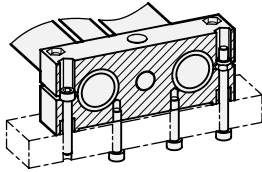




**Mounting facilities of the end pieces**

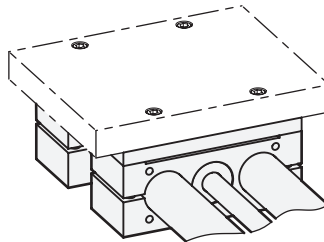
Horizontal  
with screws for thread d4 or bore d5

Vertical  
From outside, with screws for thread d3  
From inside, with screws for bore d6  
From inside, with screws for bore d5 / d7



**Mounting facilities at the slider**

Mounting with screws for thread d8



**Assembly of position indicator and handwheel**

Usage of installation kit, position indicator and handwheel, see table.

